

PERFORMANCE GOALS

Caltrans Mile Markers

SAFETY AND HEALTH

Percentage of Active Transportation Funds Allocated vs. Programmed



37% State FY 2015-16 (previous: 9%)
98% State FY 2014-15 (previous: 73%)

Cycle 1

Percentage Of Active Transportation Projects Awarded Within Six Months



State FY 2015-16, Quarter 4

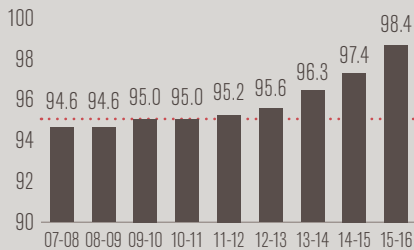
Previous period: 89%

Most recent data available

	2012	2013	Goal
Worker Fatalities in Work Zones	0	0	0 per calendar year
Auto Fatalities per 100 Million Vehicle Miles Traveled	0.67	0.67	Less than 0.5
Pedestrian Fatalities	187	257	Reduce 10% annually
Bicycle Fatalities	26	30	Reduce 10% annually

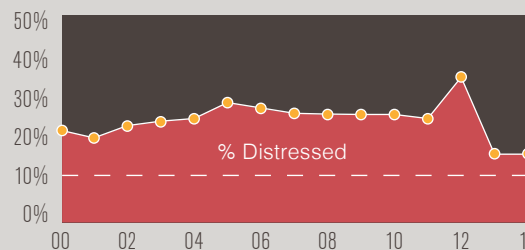
STEWARDSHIP AND EFFICIENCY

Bridge Health Index



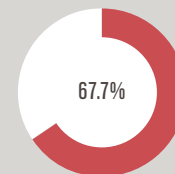
Goal: better than 95 rating by 2020

Pavement Health Index



Goal: less than 10% distressed by FY 2024-25

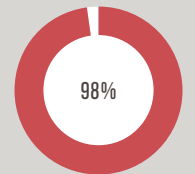
Percentage of Intelligent Transportation Systems in Working Order



Goal: 90% by 2020

Previous period: 65.6%

Planned Projects Delivered in Fiscal year 2015-16

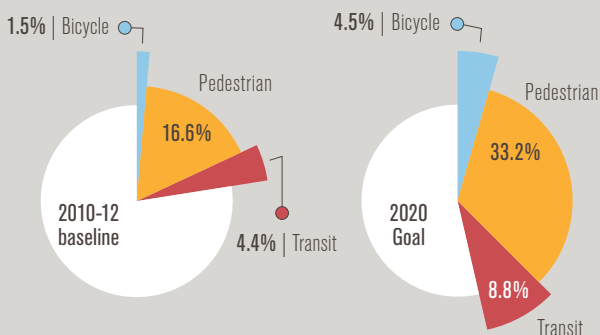


Goal: 100% annually

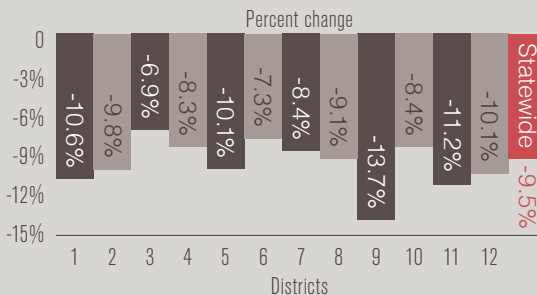
Previous period: 98%

SUSTAINABILITY, LIVABILITY AND ECONOMY

Percentage of Commutes

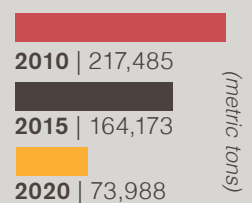


Vehicle Miles Traveled per Capita (2014)



Goal: 15% reduction by 2020

Greenhouse Gas Emissions from Caltrans Operations



Goal: 20% reduction from 2010 baseline by 2020

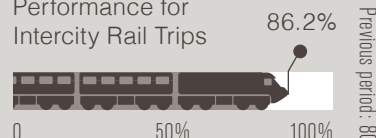
SYSTEM PERFORMANCE

Travel Time Reliability (2015)



Goal: by 2020, one-tier improvement from established baseline

2016 End Station On-Time Performance for Intercity Rail Trips



Goal: 90% by 2020

Previous period: 80.2%

Caltrans Mile Markers, continued on page 27